

## promis•e® V8i

### THE ULTIMATE SET OF CONTROL SYSTEM DESIGN TOOLS

promis•e control system design software is the world's leading electrical control system design product. If you've ever designed an industrial control system, you know it's a complex, difficult task involving electrical schematics, connection lists, panel layouts, bills of material and more. promis•e integrates all these functions, allowing you to work quickly, accurately and efficiently.

#### Project-based Workflow

In promis•e, work is organized into projects, allowing many drawing pages to be linked for cross referencing, error checking and list generation. Changes made in one part of the project are automatically reflected in the rest of the project.

#### Fast Schematic Design

With built-in symbol libraries, macros and cut & paste capabilities, promis•e provides quick generation of control system schematics. System logic also provides automatic device ID assignment, real time automatic cross referencing, automatic wire numbering and error checking. Truly an international product, promis•e comes equipped with standard IEC and ANSI-IEEE page formats. Symbol libraries are available for ANSI and IEC electrical applications as well as for hydraulic, pneumatic and process control drawings.

lists, panel layouts and other documents. Parts database files are available for many leading equipment manufacturers, saving you from having to enter this data. The promis•e parts database can be linked to and referenced from AutoPlant® software.

#### Automatic Documentation Generation

Superior documentation is provided by a project database linked to the schematic, allowing bills of material, purchase order lists, panel layouts, terminal plans, wire lists and wiring diagrams to be generated automatically. By creating this documentation automatically based on drawings and other system information, there are fewer errors in the results and any design revisions are quickly reflected in the reports.

#### Flexibility and Data Exchange

With promis•e you can exchange project data with other applications such as AutoPlant, Bentley® Instrumentation and Wiring, Bentley® Data Manager and PLC programming software. You can generate schematics automatically from commands stored in a spreadsheet file.

#### Platform Options

Running as an application on top of AutoCAD or MicroStation®, promis•e software allows users to remain in a familiar environment while accessing a powerful set of control system design functions. A standalone version is also available.

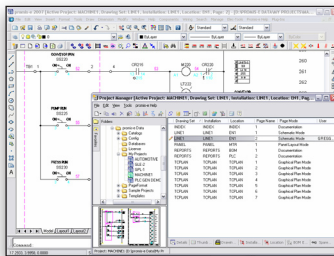
*With built-in symbol libraries, macros and cut & paste capabilities, promis•e provides quick generation of control system schematics.*

#### Error Checking

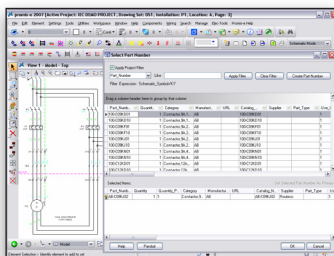
As you create drawings, promis•e alerts you to possible errors. This reduces the amount of manual checking that must be done, improves the overall accuracy of the drawing and prevents costly corrections later on. Error conditions include short circuits, gaps in the circuit, duplicate device IDs, duplicate wire numbers, missing part numbers, missing cross references, and over-assignment of contacts (for example, five contacts for a four pole relay).

#### Integrated Parts Database

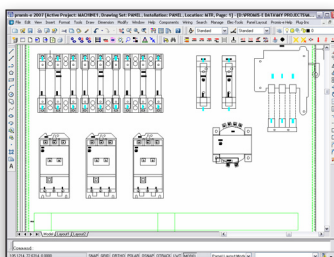
A parts database is included with promis•e. This allows you to associate components in your design with specific parts information and facilitates the generation of parts



Project-based workflow



Integrated parts database



Panel layout mode

## SYSTEM REQUIREMENTS

### Operating System:

Microsoft Windows 2000, Windows XP, or Windows Vista (32 bit version, Home Premium or better, or 64 bit version, Home Premium or better)

AutoCAD 2006, 2007, 2008 (32 bit version) or 2009 (32 bit version)

MicroStation or MicroStation PowerDraft®, V8 XM Edition (for MicroStation add-on versions)

SQL Server or Oracle database software. An express version of SQL Server is included.

### Memory:

2 GB recommended

### Hard Disk:

650 MB free hard disk space minimum

### Display:

1024x768 screen resolution minimum

## ABOUT BENTLEY

Bentley Systems, Incorporated is the global leader dedicated to providing comprehensive software solutions for sustaining infrastructure. Architects, engineers, constructors, and owner-operators are indispensable in improving our world and our quality of life; the company's mission is to improve the performance of their projects and of the assets they design, build, and operate. Bentley sustains the infrastructure professions by helping to leverage information technology, learning, best practices, and global collaboration – and by promoting careers devoted to this crucial work.

For more information, visit [www.bentley.com](http://www.bentley.com)

## BENTLEY OFFICES

### Corporate Headquarters

685 Stockton Drive  
Exton, PA 19341 USA  
1-800-BENTLEY (1-800-236-8539)  
Outside the US +1 610-458-5000

### Bentley Systems Europe B.V.

Wegalaan 2  
2132 JC Hoofddorp  
Netherlands  
+31 23 556 0560

### Bentley Asia

Unit 1402-06, Tower 1,  
China Central Place,  
No. 81 Jianguo Road,  
Beijing, 100025, China  
+86 108 518 5220



## promis•e AT-A-GLANCE

### General/System Features

- Online Tutorial
- User Interface in Foreign Languages
- Command Protection
- One-Click Navigation
- Search Tool
- Fully Open API
- Floating Network License
- Project-wide Data Edit

### Drawing/Design Features

- Project-Based Design Organization
- ANSI/IEEE or IEC Electrical Symbol Catalog Included
- Optional Catalogs: Hydraulic, Pneumatic and ISA
- Manufacturers Parts Databases and Symbol Catalog
- Import parts data and attributes from AutoPLANT
- Ladder Builder
- Global Find/Replace Wire Property
- User-Definable Device Tag Formats
- User-Definable Wire Layering
- User-Definable Wire Tag Formats
- Cable Termination Diagrams
- Automated Balloon Callouts
- Panel Layout Mode
- BOM Explorer
- Dynamic Symbol Text
- Automatic Component Align
- Global Find/Replace Symbols & Symbol Properties

- Automatic Wire Numbering
- No Page Limits
- Automatic Page Numbering
- Automatic Page Save
- Automatic Project Copy
- Page Copy, Rename, Move
- Global Title Block Replace
- Automatic Device Tagging
- Custom Symbol Creation
- User-Definable Circuit Macros & Symbols
- Symbol Migration Tool
- AutoCAD Block Migration Tool
- Intelligent Off-Page Wire References
- Automatic Wire/Line Break & Heal
- Automated Circuit Copy
- Wire Crossing/Connection Preferences
- User-Definable Wire Property Display
- Catalog Manager
- Cable Manager
- PLC Schematic Generator
- Automatic PLC Addressing
- PLC I/O Import
- Automated Symbol Rotation
- Real Time Cross-Referencing Across Multiple Pages
- Multi-User/Discipline Collaboration
- Multiple Undo/Redo Capabilities
- Instantaneous Real Time Error Checking
- Forced Wire Routing
- Dynamic Wire Diagrams

- Terminal/Pin-Plug Manager
- Graphical Terminal/Pin-Plug Plans
- Spare Parts Utility
- Multi-Language Drawing Text
- Drawing Mode Manager
- Shortest Distance Wire Routing

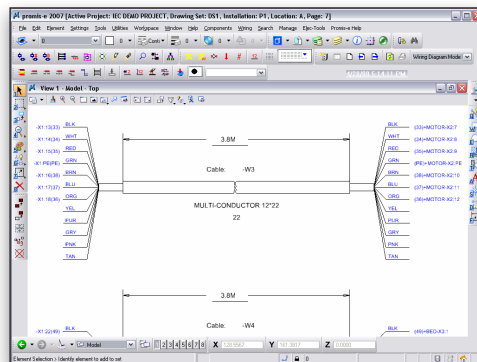
### Reports and Documentation

- Automatic Report Generation
- Bill of Materials
- Wire List
- Wire Labels
- Wire Length Calculation Reports
- Cable List
- Terminal-Plug List
- PLC List
- Job Costing Report
- Field Wire List
- Revision History Reports
- Custom Report Designer
- Output reports to TXT, CSV, HTML, RTF, PDF, XLS, MHT files
- Project Publisher

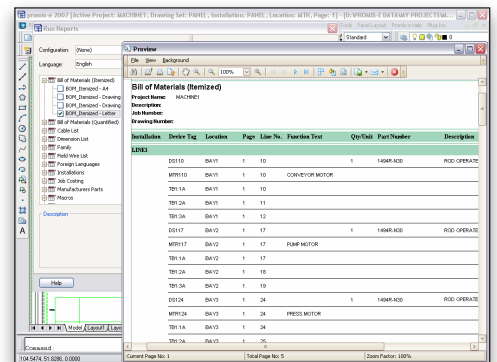
### Special Utilities

- Project Builder
- Komax Wire Wizard
- Hoffman Panel Builder
- Panduit Selection Tool

\* promis•e is offered in levels with different combinations of these functions. See the web site for more information.



Cable diagrams



Automatic report generation