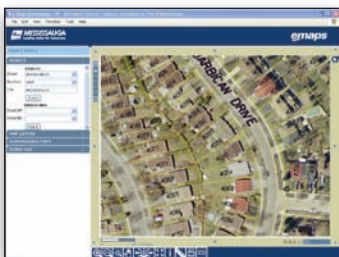




## Bentley® Geo Web Publisher™

### Easily Author and Deploy Web GIS Applications

Bentley Geo Web Publisher is a comprehensive application for the creation and management of web-based geospatial data. Use Bentley Geo Web Publisher to create an easy-to-use web interface to disparate data sources for a wide range of Web GIS applications such as municipal information systems, image or drawing archives, map-based navigational sites, project sites, and public information portals.



*Publish geospatial data securely and quickly via a Web browser.*

#### Optimized for Publishing Geospatial Data

Integrated vector and image server engines publish hybrid vector/raster datasets and a wide range of formats, making it easy to incorporate drawings, maps, models, aerial photography, and images within custom browser presentations.

Bentley Geo Web Publisher provides functionality for data integration, web site creation and layout, web site administration and maintenance, as well as end-user tools providing for map navigation, querying, analysis and reporting. There are choices for layout, colors, display controls, tools, and other interface elements as well as map management.

public audiences. Bentley Geo Web Publisher publishes information with full fidelity and with optimal performance.

#### OGC WMS and WFS Support

Bentley Geo Web Publisher has implemented the OGC's Web Map Service (WMS) specification. WMS supports the creation and display of registered and superimposed views of information that come simultaneously from multiple remote and heterogeneous sources. The WMS Server allows any WMS client to view information published by Bentley Geo Web Publisher as raster JPEG or PNG files. The WMS Server also supports backdrop transparency and translucency for elements. Bentley Geo Web Publisher also acts as a WFS server.



*Easily integrate data from multiple sources into a single web interface.*

#### Data Integration

The Bentley Geo Web Publisher data model facilitates the integration of multiple graphical and non-graphical data sources into one homogeneous web interface. Bentley Geo Web Publisher is built upon a publishing workflow optimized for publishing geospatial data. It allows publishing from a broad choice of data sources ranging from DGN, SHP, TAB DWG, raster images, and information created by Bentley GIS products to information in relational databases, including Oracle Spatial. Information can be quickly and easily combined into a homogeneous composition. The structure is optimized for organizations like municipalities where information is highly interrelated.

#### Reporting and Analysis

Powerful end-user functionality is delivered in Bentley Geo Web Publisher. Users can generate reports and perform spatial analysis from the web browser. Open-ended questions as well as streamlined queries can be presented to your end-users, minimizing the amount of time necessary to find information. Reports can be generated from queries, spatial analysis, or by other means such as multiple feature selection. These reports may include multi-tabbed views of textual data and multimedia information as well as downloadable files.



*Create powerful and compelling public websites that are easy to navigate.*

#### Intuitive Tools to Build and Maintain Geospatial Web Sites

Straightforward site authoring and administration tools make configuration quick and allow sites to evolve as needed making it a low cost of ownership product. There is no need for development services to create and maintain Web GIS applications. The end-user tools for navigation, query, spatial analysis, thematic mapping, and reporting can be fully configured via the handy site author. Share information within your organization, with other organizations, and with broader

#### Map Viewer

An end-user client optimized for enhancing the map experience and ease-of-use is delivered with Bentley Geo Web Publisher. Functions such as tooltips, measure, buffer, and scale are dependent on the data presented, that is, the Map Viewer is "map aware". Enhanced capabilities such as selectable features, scale-dependent display control, and analysis functions are provided with the Map Viewer.

## System Requirements

### Processor:

Intel Pentium-based or AMD Athlon-based server.

### Memory:

Minimum 2 GB (4 GB or more typically results in better performance).

### Hard Disk:

1GB minimum free disk space

### Video:

Graphics display color depth should be set to 16 or 32-bit.

### Operating System:

Microsoft Windows 2003 Server, Microsoft Windows 2003 Server x64, Microsoft Windows 2008 Server, Microsoft Windows 2008 Server x64, Windows 2008 Server R2,

### Software Prerequisites:

- Prerequisites for Bentley Desktop Applications 08.11.07.03
- Internet Explorer 6 or later
- Microsoft Internet Information Services (IIS)
- ProjectWise Explorer V8i or XM in order to publish from a ProjectWise datasource

### iDPR Converter Requirements:

Prerequisites for Bentley Desktop Applications 08.11.07.03

Most industry-standard devices are supported. Works with output devices supported by Windows

### Video

Windows-supported graphics card

**Find out about Bentley at: [www.bentley.com](http://www.bentley.com)**

### Contact Bentley

1-800-BENTLEY (1-800-236-8539)  
Outside the US +1 610-458-5000

### Global Office Listings

[www.bentley.com/contact](http://www.bentley.com/contact)

## Bentley Geo Web Publisher At-A-Glance

### Multiple Publishing Options

- Publish hybrid vector/raster data from multiple data sources
- Full attribution and complex geometric shapes/forms are easily published
- Original presentation quality
- Google Earth Publishing in 2D and 3D
- Transparency and translucency

### Fully-Featured User Environment

- GIS user-friendly
- Spatial navigation
- View control (zoom, pan, and window area)
- Layer controls
- Easy map creation tools
- Scale-based navigation
- Spatial analysis
- Multiple queries
- Reporting
- Print and plot to scale
- Redlining tools
- Thematic analysis, pie charts
- Markup and editing

### Data Integration

- Integration of multiple graphical and non-graphical data sources
- Native Oracle Spatial data published live
- Oracle Spatial dynamic source option can be activated to enable publishing of real-time updates
- Geo-referenced tabular data
- Virtually any type of raster image files, including raster mosaics
- 30+ industry-standard raster formats
- Multiple relational databases
  - » ODBC
  - » Non-graphical
  - » Graphical from stored coordinates
- Bentley Map®
- MicroStation® DGN with database linkages
- AutoCAD DWG
- GIS data: SHP, MIF/MID, TAB
- Embed symbols that invoke queries or that link to URLs
- Hyperlinks to other sites, documents, multimedia
- WMS

### Map Viewer Client

- View control (zoom, pan, window area)
- Tooltips
- Measure, buffer, scale are dependent on the data presented
- Map Aware
- Measurements
- Scale dependent display
- Copy view
- Zoom to scale
- Scaled plotting
- Topology operations
- Downloadable
- Install for easier intranet deployment
- Installs unlimited

### OGC Support: WMS and WFS

- Geo Web Publishing acts as a WMS Server 1.1.1
- Geo Web Publisher acts as a WMS Client 1.1.1
- Geo Web Publisher acts as a WFS Server 1.1.0 and 1.0.0
- Support for output of raster images in JPEG and PNG
- Any WMS client can view Geo Web Publisher maps
- Extended WMS query keys

### Query

- Query non-graphical sources related to graphical sources
- Simple and complex query
- Multiple databases

### Thematic Mapping

- Resymbolize based on unique values, equal ranges, equal count, pie charts
- Thematic object depicts a handy legend for interpretation

### Reporting

- Generate Reports from queries, spatial analysis, or multiple feature selection
- Multi-tabbed views of textual and multimedia information
- Downloadable CSV, XLS

### High Performance Publishing

- Dynamic or static pre-publishing of data

- Pre-publishing uses versioning and workflow knowledge in the Geospatial Server to initiate publishing dates

### Site Authoring

- Rapidly prototype and test changes to your website
- Choose layout, colors, icons, display controls, tools, and other interface elements
- Define location of map and related objects on layout
- Define queries, including locate/highlight options and input parameters
- Define reports
- Define thematic and feature presentation
- Create multiple searches and advanced database formatting

### Map Authoring

- Easy-to-use tool for creation of maps from defined data sources
- Simple thematic symbology definition
- Scale navigation setup
- Pre-published and dynamic layers
- Create layers from several sources
- Resymbolize during pre-publishing or create dynamic new representations

### Simple Administration

- Administrator GUI
- Easy deployment
- Local and remote access
- Access rights for the administration tools
- Automatic web server configuration
- Definition of data source connections
- Database logins
- Cache configuration